

leisure boating

SA's top selling powerboat magazine

The ups & downs to perfect trimming!

5 TIPS
TO GET SHIPSHAPE FOR SUMMER



REVIEWED

+ ELF 1350
ORACLE 17

SENSATION 23 WS



R32.00 VAT incl. Other R28.07



ALSO INSIDE: On test: Suzuki Grand Vitara | What SUP?
RIB & CHIP SPECIAL: Part 2 | Mercury's Active Trim explained
The pro's of pontoon boats | You, me and a Squadron 53

Sensation

Boats & Living



SENSATION BOATS & LIVING: +27 16 366 1630/1 • +27 83 545 8514 • +27 82 445 1543
+27 72 544 8146 • sales@sensationboats.com • www.sensationboats.com
FIND US ON GOOGLE MAPS Sensation Boats • **GPS** 26°31'00.61"S 28°02'00.19"E
OPENING HOURS: Mon-Fri: 08h00-17h00 • Sat: 08h00-13h00

Find us on:
facebook.



They say that the best two days of any job is your first day, and your last. Well, in my opinion, anyone who says that has never been the editor of a boating magazine, as my time here at the helm has been a life-changing experience, which I have been thankful for, and proud of, each time I saw a new edition on a shop shelf. And, with that said, writing this editorial signifies my last moments of being in charge of the quality entertainment you love this title for. I've been extremely fortunate to have been the editor of this prestigious title for exactly 10 years now, but alas, it is my time to take a step back and allow the team here to continue taking the name forward.

Being immersed in an industry, editors usually use their 'stepping down' opportunity to unleash hard-to-swallow truths which they weren't in a position to dish out before. But, if that's what you're looking for, I sadly don't have any to share. Sure, over the years there have been those people who have taught me to recount my fingers after having shaken hands with them, but these days, it's only really the reputable businesses with good ethics which are around and we, as a magazine, wholly support. Truth be told, I've have had the good-fortune of meeting some of the finest, salt-of-the-earth type people; and if you find them in this magazine, chances are I would highly recommend them.

What I will leave you with is this: don't always blindly trust everything you read. Having seen what I have in various other titles, I can only shake my head.

It is for this reason that *Leisure Boating* built its core values on being reputable and authoritative on all things boating, but I have always encouraged readers to use our information for reference and to rather make up their own minds.

I'd like to take my final opportunity to thank our loyal readers and supportive clients for their unrelenting backing over this magazine's 18-year history. Not only have you made us SA's top selling powerboat magazine, but you've given me the best years of my life!

Happy boating, always!

For future editions, Stuart Reichardt, whose writing has made our magazine the number one source for boating facts and entertainment, will be stepping up to the wheel and will be running the magazine and website to propel it onward and upwards. I trust he will continue to receive the warm and kind-hearted emails and letters our readers have sent in over the years. To get in touch with Stuart, post on our social media (@Leisure Boating magazine) or email stuart@leisureboating.co.za

- Dean



Dean Castle
Editor



Stuart Reichardt
Journalist

www.LeisureBoating.co.za

WARNING The views expressed in this publication are not necessarily those of the publisher. Some of the photography may show stunts performed by professional persons and may prove dangerous to inexperienced people. Always exercise extreme caution and seek the help of an experienced person before attempting similar manoeuvres.

PUBLISHER

Godfrey Castle
godfrey@caravansa.co.za

EDITOR

Dean Castle
Dean@leisureboating.co.za

JOURNALIST

Stuart Reichardt
Stuart@leisureboating.co.za

DESIGN & LAYOUT

Hayley Davis
Kyle Collison
Claire Barwick

AD CO-ORDINATION

Lyn Castle

PROOF READER

Dave Fall

WEBSITE MANAGER

Paul Castle

ADVERTISING ENQUIRIES (COUNTRYWIDE)

(021) 702 4200

SALES SUPPORT INCLUDING AD MATERIAL AND GENERAL SALES ENQUIRIES

Denise Reid-Daly
traffic@leisureboating.co.za

SUBSCRIPTIONS

Desiree Daniels
subs@leisureboating.co.za

SUBSCRIPTIONS

R295 (12 issues)
R555 (24 issues)

PHONE

Tel: (021) 702 4200

POST

Send mail to us at:
Caravan Publications (Pty) Ltd
47 Bell Crescent
Westlake Business Park,
Westlake
7945.
PO Box 31062
Tokai, 7966.

EMAIL

info@leisureboating.co.za

**PUBLISHED BY
CARAVAN PUBLICATIONS (PTY) LTD**

CONTENTS



FEATURES

04 Suzuki Oracle

The Oracle 17 is the latest family-friendly, go anywhere and do anything leisure craft from the Suzuki stable. Offering the ideal platform for water sports fun, join us as we take this craft out for a day on the water.



12

08 Sensation 23 WS

Sensation's new 23 WS is all about innovation. With a long list of standard features and an exciting, forward-facing Volvo inboard, we see how much pull this boat has really got.

12 Elf 1350 Fisherman

If dynamite comes in small packages, then the Elf 1350 is fully nuclear! Packing enough punch to fight outside of its own class, this trusty fun runabout is the perfect, affordable way to spend the day fishing the dam or ocean.

14 Gem Nagle dam & game reserve

Nagle Dam and Game Reserve is set in the Valley of a Thousand Hills and this beautifully scenic area offers excellent fishing opportunities, kayaking and canoeing, nature trails, lots of water sports and game viewing.

16 Take the noon pontoon

Releasing the stress that has accumulated over the working year can be as simple as taking family and friends out on your pontoon for some fun in the sun. Leisure Boating points you in the right direction.

18 Rib & chip special – part 2

Caring for your inflatable is not all hot air! In this second follow-on article we discuss a few more RIB related topics that will assist you in keeping your inflatable in the best possible condition.



20 Suzuki Grand Vitara test

Editor Dean Castle puts the flagship Suzuki Grand Vitara through its paces, with a boat in tow at Quaggaskloof Dam and answers some of the questions that are often asked about this cleverly positioned brand.



22 What SUP?

No doubt you've seen a stand up paddleboard (SUP) on your favourite stretch of water, and wondered what it's all about. SUPs offer a great vantage point to quietly explore the shallows and depths. It's really not nearly as difficult as it looks.

26 Mercury active trim

Leisure Boating chats to Rob Naysmith, owner of Offshore Sportfishing Charters, about the new Mercury Active Trim that he recently had fitted to his charter boat.

30 Without a glitch

Summer is upon us and as winter fades into the hot balmy days, so we take the covers and tarps off our boats and get them ready for action. Let's look at some of the best tips to getting your boat out on the water without a hitch.



34 Trimmed for summer

Getting the trim just right on your new boat takes a bit of practice, but we all know that practice makes perfect. It won't be long before your boat is gliding across the water and you have become a seasoned pro at getting your boat trimmed.

REGULARS

- 46 Boating news**
- 48 Classifieds**
- 49 Subscribe to Leisure Boating**

38 Austral Marine

An exciting new chapter is unfolding at Austral Marine with founder Don Jarret retiring after 35 years at the helm. Jacques Brümmer, the newly appointed CEO, has the exceptional vision to take the company forward. We find out how and why.

42 Squadron 53

Boating World announces exciting news about the Squadron 53 Flybridge that will be gracing Cape Town waters in July 2018. Find out just how to own your very own piece of her.

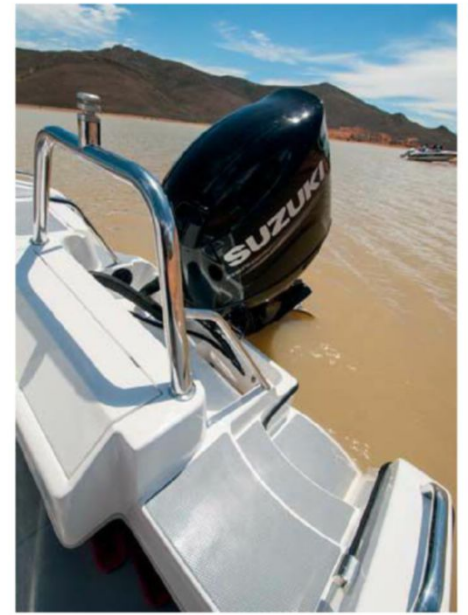


Oracle 17

The Oracle 17 is a sport utility craft, made to be versatile and crafted to be fun. Whether you're taking the kids for a day of watersport, or heading offshore with the boys in search of fresh fish, this craft bridges the gap between having to make the choice.



Words and pictures by **Dean Castle**



The Oracle range is no newcomer to the industry. This locally built boat has been making waves for the past couple of years, and I'm impressed to see that the fit and finish has been further improved as time has ticked by. If you need an excuse to spend more time on the water this summer, then the Oracle 17's versatility may just be the answer.

Deck layout

The 17 foot Oracle is the ideal size between easy handling and sufficient deck space. We heading out for the day on the water – and with six persons on board, as well as a selection of slalom and trick skis, we still had enough personal bubble space to look each other in the eye afterwards. The extra wide helm seat allows for the skipper plus one, but if you're going to tackle the ocean, a standing position feels just right on this craft. A seat on the front of the helm can be flipped up and into place when needed, or neatly folded down to give a roomier bow area when the lines are in the water. Additional rear-facing seats are located on the bow for two crew – or for mom to be seated at with a perfect view for watching the kids learning to ski. Convenience is catered for on the Oracle 17 with steps leading up to the deck on the bow, as well on the outside of the transom leading into the boat when people need to get back onboard.

Since you are likely to be chasing the fish with a boat like this, it has been equipped with the angler in mind. There



are sufficient rod racks in the gunnels for storage, as well as built into the sides of the binnacle. Rod holders are located in the top of the gunwales, as well as on the back of the skipper's chair. When it comes to the bait storage, a hatch at the transom with a window is right where you'd need it – or alternatively it can be used as a cooler box when fishing isn't on the cards.

This Oracle is equipped with a full wet deck, meaning that water is almost instantly drained from the boat if it makes its way onboard.

The helm is simple and elegant, giving you the instrumentation that you require; but if you're looking to fit a fish finder, there's plenty of space to allow for even a large screen device.

Performance

The Oracle, which we had the pleasure of using for the day, was fitted with a single Suzuki 150 HP. Although this large displacement 4-Stroke greatly contributes to a powerful acceleration and torque, Suzuki claims this engine to be one of the lightest in its class. It certainly has the raw grunt, dropping the hammer down to pop the hull, five on board and a skier out of the water without a hint of struggle. If you're looking to save on the price, you could probably get away with Suzuki's 115 HP, but really, the 150 provides the Oracle with good balance and plenty of power for when you need it. There really is no need to go any bigger.



Quaggaskloof dam is a popular hangout as boats go out in their droves when the weather is good. Crossing over other boats' wakes, the Oracle maintained a smooth and comfortable ride which also proved to be super stable. When there's a wind chop on the water, the 17-foot glides across it with little vibration – something which really stood out for me.

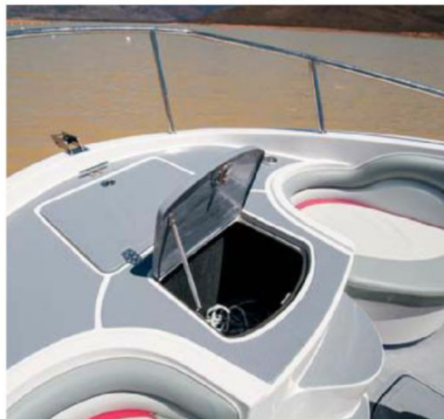
This Suzuki motor uses fly by wire technology instead of traditional cables, meaning that throttle adjustments and gear selection is instant and responsive. When it comes to figures, the Oracle accelerated from 0-plane in around three seconds and bulleted to a top speed of around 75 km/h. Throttling back to trick skiing speeds, I enjoyed the Oracle's ability to maintain its course and ride true. And, when standing at the helm, you really get good vision all around the craft to ensure a much safer skippering experience.

Conclusion

The Oracle 17 is one of those boats which performs perfectly at what it's designed for. Take it on an ocean adventure or cruise the dam in comfort and you'll soon see why this versatile craft has impressed me beyond belief.

Pricing starts at R350 000 with a 115 HP.

For more information contact Atlantic Suzuki on (021) 555 1977. **LB**



THE PASSION FOR PERFECTION

Verado 400



FourStroke



The Verado 400R is THE NEW STANDARD OF PERFORMANCE with 2.6L Supercharged with Cold Air Intake, charge air cooling and electronic boost pressure control delivering incredible achievements in power and efficiency. A 400hp outboard producing 298kw at 7,000 rpm – MAKE A STATEMENT

Learn more at rutherfordmarine.co.za or visit your local dealer.



MERCURY
GO BOLDLY.™

Words and pictures by Dean Castle

SENSATION

23 WS



With a growing wake surfing community, the search for a crisp, clean wake has become more prevalent than ever. South Africa has joined the ranks of wake-capable craft and presents a locally built beauty – the Sensation 23 WS.



The all-new Sensation 23-foot shows that the company is continuously innovating to stay abreast of the latest technology. The standard Sensation 23 has been custom-made to house a built-in Volvo drive which is unlike any other. Instead of a tradition propulsion unit which pushes water, it instead faces forward to pull the water through the propeller. We'll delve deeper into the engine a little later, but let's first start with the onboard features that make this craft so unique.

Deck layout

You'll never be pressed for space onboard as there's enough seating for far more than eight of your mates. Comfortable U-shaped wrap-around seating at the stern maximises on the available room without separating the areas – and when the sun is beaming down, you're sure to make use of the extra length to really sprawl out on. In the cockpit mid ship, two swivel bucket seats means you can be part of the conversation and not just the friendly Uber boat driver for the day. Upfront, the bow section quickly converts

from a conventional bow-rider to a large sun pad from which the kids can feel the wind through their hair as your power down the river. Now, I prefer not having to constantly worry about messing up the seats with passengers entering and exiting the boat from the stern, and I feel like the builders know that this can be an issue. For this, they have creatively allowed for a cut out walkthrough section so that your guests (and their muddy shoes!) won't leave permanent 'I was here' scuff marks. In the step-down landing, you'll also find a nifty, built-in cooler box which is perfect for storing some cold drinks for the day without getting in the way – but just a suggestion, make sure it's closed when not in use as you may be wondering where young Timmy disappeared to when he was hopping onboard.

Take note of the hand-made decking, which I just love. It goes a long way to give this boat a classy, high-quality look and feel, similar imported boats.

When it comes to storage, the Sensation 23 has got plenty! Find roomy compartments under all of the seats, ensuring that you can be prepped and armed for anything the day could throw at you.

The helm is designed to be neat and uncluttered. With easy-to-read gauges and fat-finger proof switches for turning





on various accessories, it's evident that this 23 was built with the skipper's comfort in mind. The steering wheel and throttle seem to be at the right locations for your hands to rest on, making this craft a pleasure to drive.

Performance

Now, what sets the 23 WS apart from any other boat in South Africa at present is that it uses Volvo's forward-facing gearbox – which is said to host a long list of benefits. They say that the design enhances a boat's ride characteristics, whether you're just cruising or doing almost any watersport. What is truly evident is that it provides a more comfortable ride; since the props are situated under the boat, it means less noise and exhaust fumes. A Duo-prop setup, which sees two propellers on the same shaft but spinning in different direction, negates torque roll, smooths out the ride,

gives better bite and results in a more economical fuel-efficiency in comparison to traditional gearboxes.

This all sounds good in theory, but what are the results? Running back to back with Sensation's traditional rear-facing 23 SXi – which is the same boat – its improvements were pretty notable. Hopping onto the plane, the Duo-prop sinks its blades into the water to really get you going, which is superb for popping a rider up out of the water. In comparison to the normal 23, the WS also has an increase in top speed by 5 km/h to reach 80 @ 5 000 rpm when measured on the GPS. When you're stretching this motor's legs at full throttle, the steering is almost too light, as even little movements show that the motor and hull combination are super responsive. In tight corners, you'll want to make sure you're holding on as the directional thrust

points the nose in the exact direction without any cavitation.

It was a calm weekday on the Vaal river, so I had to make some waves of my own in order to see the feedback it would give the hull. With its sharp V and deadrise, the Sensation cut through the wakes with little effect or reverberation.

Conclusion

The Sensation 23 WS comes fully kitted for wake surfing. With its three built in tanks for pumping up the ballast, a premium quality Monster Tower, an impeccable finish with custom hull graphics, this boat certainly looks the part of an imported wake craft. And since it's locally built, it's a feather in the cap for this local boat builder.

Pricing starts at R845 000. For more information, contact Sensation Boats and Living on (016) 366 1630 or 083 545 8514.

**THE
ULTIMATE™
4-STROKE OUTBOARD**

DF150AP



Visit your Suzuki dealer for Specials!

- Big Block
- Drive by wire for smooth operation
- Variable valve timing system
- Large reduction gear ratio of 2.50:1

- Lean Burn superior fuel economy
- Suzuki selective rotation
- Dry weight L:236kg, X:24



www.SuzukiMarine.co.za

ELF 1350 FISHERMAN

They say that dynamite comes in small packages – and when it comes to the Elf 1350 Fisherman, the old adage certainly rings true. Never again will you have to be choosy about your secret fishing spots as this fun runabout will allow you to cruise the waterways all day on a little more than a whiff of fuel.

Words and pictures by **Dean Castle**



There are a number of reasons why smaller runabout boats could suit you, but topping the list has to be practicality. Measuring just 4.08 metres in length with a beam of 1.7 metres, the Elf 1350 Fisherman is just so easy to own. Light on its trailer, easy to launch and a pleasure to skipper, this craft is sure to be desired by those looking for something extra nimble and affordable. What's more, it punches above its category too as it can handle both fresh and saltwater adventures, thanks to its wet deck which allows any water which may make its way onboard to be quickly drained out the back.

DECK LAYOUT

You'd be forgiven for thinking that a 13.5-foot craft can offer little more than the bare essentials, but really, the Elf Fisherman is geared towards giving you all that you could need for a day's angling at your local hotspots. While the centre console design adds good stability to the craft, it also provides for a walk around layout with rod storage in both gunnels. There's also padding along the sides to give you thigh support when you've up against the side and reeling in a decent catch.

When it comes to seating space, the Elf offers up a variety of options. The skippers chair is wide enough to seat two, albeit snugly, or you can make use of the two separate seats at the stern. Of course, rear-facing cushioning up front on the bow will be the ideal space with plenty of legroom. Storage areas are located underneath all of the seat bases and should provide enough room to store the day's goodies and all the tackle you'll need.

The floor of the Elf has got a non-slip texture to it, so even though the wet deck drains the water away, you shouldn't be slipping or sliding all over the show when under way.

With the skippers chair turned sideways, instead of straight forward like a jetski, the helm is comfortable to sit at, or even stand at, if you're trying to negotiate some tricky waters.

PERFORMANCE

Almost unbelievably, our little review Elf 1350 Fisherman was kitted out with Mercury's bullet-proof 30 HP. This outboard is uber frugal, meaning that you can really cruise the water all day long and hardly see a difference on the gauge! Remarkably, the powerhouse outboard pushed the Elf extremely well – even with three solid gents on board. It climbed onto the plane neatly in around 3.5 seconds and accelerated right up to top speed. Unfortunately, a speedometer wasn't fitted, but a blistering pace isn't what the Elf is all about anyway. With my estimate of around 50 km/h, it certainly felt more than quick enough for this boat's purpose. I kept the throttle at around 60% which provided a good cruising speed across the slightly choppy waters of Knysna's lagoon. At full flight, the hull feels light as it skips across the water's surface, while at cruising speed, the shape of the trimaran cathedral hull provides a cushion of air to keep the ride soft and smooth. A further benefit of this design is that the hull requires less draft, allowing you to safely navigate shallow water estuaries and lagoons.

CONCLUSION

The Elf really is a powerhouse package. Well specced, it offers all you need to get on the water at an attractive price tag, which includes a boat cover, nav lights, switch panel, sun canopy and stainless mooring cleats as standard.

Pricing starts at R165 000

For more information, contact Marine and Powersports on (044) 382 4090. **LB**



NAGLE DAM & GAME RESERVE

WHERE NATURE BREATHES LIFE INTO THE SOUL



Nagle Dam and Game Reserve is set in the Valley of a Thousand Hills and is located about an hour from Durban and Pietermaritzburg. This beautifully scenic area offers excellent fishing opportunities, kayaking and canoeing, nature trails, lots of water sports and game viewing. Nagle Dam is fed by the uMngeni River, which also feeds the Midmar Dam and the Inanda Dam.

Game viewing should be on your “to do”

list as you will get to see giraffe, eland, buffalo, herons, zebra, impala, duiker and antelope. If birding is on your list, then don't forget to bring along your binoculars as you will spot spoonbills and sparrowhawks, among numerous others. The dam also offers excellent bass fishing and houses a fish hatchery that offers booked guided tours.

There is a fully equipped conference centre offering accommodation for up to 18 guests, offering the perfect opportunity

to host a team building event for your company or host a workshop.

All accommodation at the dam offers braai facilities and is self-catering. If you really want to relax, opt for the fully catered option when you book and put your feet up and let others do the work for you.

An onsite café offers basics such as snacks, drinks and wood. Extra beds are available on request for any of the accommodation options.



TOP TIP: At Nagle Dam and Game Reserve, there is a glacial rock formation which dates back 300 million years to when Africa was part of the supercontinent of Gondwana.

HOW TO GET THERE:

From the N3 Toll Road to Pietermaritzburg, take the Mpumalanga / Hammersdale / Inchanga offramp and turn right over the bridge. At the Caltex garage, turn right to the abattoir. Take the

next left turn saying Nagle Dam, go downhill for 20 km's to the entrance to the reserve.

CONTACT:

To make a booking for a well-earned weekend breakaway, contact (031) 782 8085 or (031) 765 7724 or alternatively 079 500 3189. Or, drop an email to nagle@msinsi.co.za or nagel.booking@msinsi.co.za 





TAKE THE NOON PONTON

Getting the most enjoyment from your pontoon boat is easy



Releasing the stress that has accumulated over the working year can be as simple as taking family and friends out on your pontoon for some fun in the sun. But, there are certain pointers that will make the day run as smoothly as a pontoon boat gliding along glassy waters. *Leisure Boating* points you in the right direction.

PLAN YOUR ACTIVITIES

Before you motor off into the sunset, plan a route and activities for the day. Whether it is skiing, tubing, wakeboarding or braaing aboard your pontoon, having a plan is always best. Having your activities planned out will stop the kids from getting bored!

GET EVERYONE INVOLVED

Most important is to get the children on board involved in simple tasks such as releasing the docking lines, helping steer the pontoon, assisting the captain and of course having a lot of fun with all the different aquatic sports.

SAFETY ISSUES

As always, ensure that you have the necessary safety equipment such as life jackets and fire extinguishers available for everyone on the boat. It is not uncommon

for children to fall off the boat, so having the necessary safety measures in place is paramount. And yes, believe it or not, a pontoon can sink.

SUN PROTECTION

Always have a high SPF factor sunscreen available for all aboard the pontoon. When you are having fun, you are often not aware of how burnt you are getting. Covering up with sunscreen is a must, even on a cloudy day.

FOOD & DRINK

It is always important to drink enough water when on a boat as much of the time will be spent in the sun doing fun activities. Rehydration is necessary as is having a good meal on the boat to satisfy those hunger pains. Being out on the water will make you hungry in double quick time.

GO EXPLORING

Don't take the same route every time you are out on the water. Rather, find uncharted coves and small bays to put down anchor and take in the new sights. Pretend you are commandeering a pirate ship and get the kids on board to act as if they were pirates. You might even decide to make Auntie Betty walk the plank!

BEACH BRAAI

Put down anchor at a quiet section of the waterway and have a beach braai in the shade of the surrounding trees. Grill up some scrumptious hamburgers and slap them on soft buns topped with tomato sauce, cheese, onion and lettuce. Let the kids build the fire while you oversee their pyromaniac tendencies. Remember to take all your litter with you. Do not throw anything in the water or leave anything on the shoreline when you make the braai.

CAMERA ACTION

Take along a camera, preferably a waterproof camera to document your fun day on the pontoon. It's always great to be able to look back at the photographs and videos to see everyone having a great time. You'll see smiles all round. **LB**



RIB AND CHIP SPECIAL! – PART 2

Words by **Walter Ellis**

CARING FOR YOUR INFLATABLE IS NOT ALL HOT AIR!

In this second follow-on article we discuss a few more RIB related topics that will assist you in keeping your inflatable in the best possible condition.

PRECAUTIONS

Punctures are always at the top of the list when it comes to RIBs and that is why it is important to keep sharp objects such as fishing knives, hooks and gaffs safely when being transported on RIBs. When navigating the waterways in a RIB, be cognisant of low-lying tree branches, rocky outcrops and metal protrusions at the dock.

Try and avoid dragging the boat across the sand as this also wears away at the RIB's protective material. Another thing to consider is the abrasion of things on the boat such as oars and accessories. With the constant movement of the boat, even dull objects can begin to wear away and cause deterioration of the protective coating. Remember to rinse any sand out of the inflatable after use to ensure no abrasive sand remains.

CLEANING YOUR RIB

There are many inflatable cleaners that do an excellent job of cleaning and protecting the

surface of the RIB but do not affect the underlying Hypalon. Inflatable boat cleaner can be used in a spray bottle and diluted with water during the cleaning process and will remove dirt, stains and scuff marks. Use clean rags to wipe off the loosened dirt, and when the rag gets too dirty, exchange it for a clean one. Work in small sections and clean thoroughly. Make sure you use the correct products for Hypalon and PVC boat materials. Many of the cleaning products also protect against UV damage and degradation.

PROPER INFLATION

All RIBs need careful inflation and great care needs to be taken if a high volume compressor is used to ensure the boat is not over inflated. The cells within the inflatable can easily be damaged due to excessive over inflation.

BAFFLE DIVISIONS

Each air chamber on a RIB has a baffle that separates it from the other chambers and adding too much pressure to a compartment can undermine or damage the separating baffle. For this reason it is important to put equal amounts of air into each chamber. Having a pressure gauge to check to take a pressure reading is important. During the heat of the day, the air inside the RIB will expand and create added pressure. Monitoring the pressure and releasing pressure is necessary to keep the RIB inflated at its optimum level.

TRAILERING

Be careful when trailering the RIB and ensure that no abrasive ropes or tie-downs are rubbing against the boat and definitely don't drag the boat along the ground as this will quickly do damage to it.

RIBS WITH CHIPS

Inflatables are a wonderful and affordable boating alternative which offer the user many years of fun on the water. They're east to manage, lighter than normal fibreglass hulled boats and easily transportable. With a little extra easy maintenance and care you'll be enjoying all the various watersports of your dreams ... at a fraction of the price. **LB**





SUZUKI GRAND VITARA

Either you go with the flow or you go with the tow

After spending a weekend away at the scenic Quaggaskloof Dam with boat in tow, I really got to know the Suzuki flagship - the Grand Vitara automatic. For the record, the auto gearbox worked wonders when we were launching the boat at the slipway. There was no handbrake or riding the clutch required, but rather a hassle-free boat launch without the stress usually associated with launching a

boat at an unfamiliar slipway. The Suzuki made light work of putting the boat into the water, as well as pulling it out again after the day's cruising.

Interior layout

The suede and fabric combination seating is very comfortable and the Vitara can easily accommodate four passengers and the driver. To load larger items, simply fold down the 60:40 split rear seats. Interior cabin noise is kept impressively low, an indication

of the lengths Suzuki has gone to in making a vehicle that offers the best possible ride. Suzuki has certainly done its homework with noise dampening. You can hardly hear the 2.4-litre VVT (variable valve timing) petrol motor when you're on the road. The VVT technology improves power and torque to offer 122Kw at 6 000 rpm and 225 Nm at 4 000 rpm.

The instrumentation is aesthetically pleasing in design and easy on the eye. Climate

control is standard on the Grand Vitara and the high-quality audio system offers crisp sound.

Driving pleasure

There are three driving modes that can be used depending on the environment. I used the Vitara only in 4H mode which is used for normal driving as I was mainly driving on dust roads that were relatively flat and easy to negotiate. The 4H lock mode is designed for more serious off-road driving and is

a high range 4x4 mode offering evenly distributed traction to the front and rear wheels for powering through deep mud or more difficult conditions. The third mode is the 4L lock setting which ensures there is enough low-end traction to get out of the most difficult off-road conditions.

ABS braking with EBD is standard, as well as traction control and stability control is present, which enhances control and reduces front and rear wheel slip. Ventilated discs front and rear are standard and tyres are either 17 inch or 18 inch depending on the model, and fuel for the vehicle is supplied from its 66-litre tank.


Central locking and immobilizer are standard on the Grand Vitara and it also enjoys a 3 year 100 000 km warranty, a 6 year 90 000 km service plan and AA roadside assistance – giving you piece of mind in ownership.

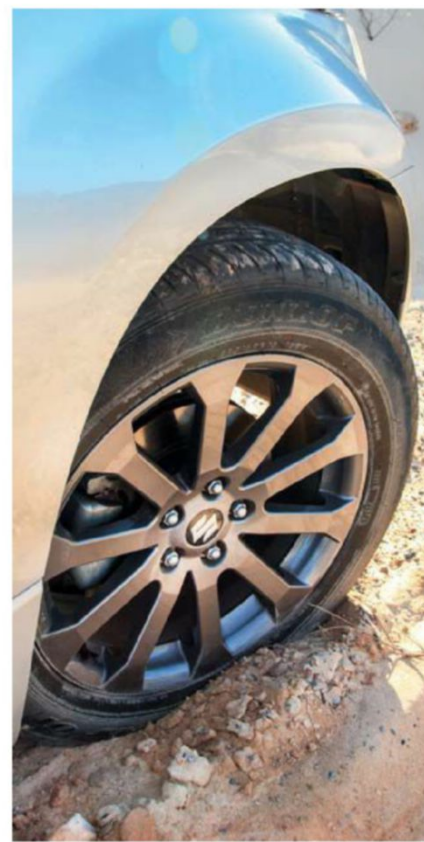
The Suzuki Grand Vitara is a capable tow vehicle that competes well against other

SUVs on the market and with the entire Suzuki range gaining a foothold in the current tough economic climate; it is a clear indication that this manufacturer is producing quality vehicles.

The final thought

The Grand Vitara made me realise that my next car, whatever it may be, will have an automatic gearbox. Blended with the Vitara's workhorse 2.4-litre engine which has ample power to lug a heavy boat up the slipway (or negotiate treacherous off-road rocky conditions), the motor and gearbox combination come together to present a package which makes driving a pleasure. With its smooth, comfortable ride, the Vitara is certainly worth a look if you're in the market for a vehicle you can drive daily – and love every second of it!

For more information, contact your nearest Suzuki dealership. 



WHAT SUP?

Words by **Martin Coetzee**
Pictures by **Dean Castle**





No doubt you've seen a stand up paddleboard (SUP) on your favourite stretch of water, and wondered what it's all about.

So we jumped at the opportunity to test a few inflatable boards from the market leading Red Paddle Co.

Paddling these boards is fun! They offer a great vantage point to quietly explore the shallows (and depths), can provide a solid workout if you choose, and are an easy way to keep the more active family members busy when your boat is moored. It's really not nearly as difficult as it looks but rather a matter of choosing the right board and then getting out on the water for some paddling. In the beginning, stability is definitely your friend - the rule of thumb is that a longer and wider board offers more of this. Long and narrow boards equate to greater speed, while conversely a short board is generally slower and more manoeuvrable. It's always best to try before you buy and chat to an experienced SUP'er, or the folk at Red Paddle Co.

WHY AN INFLATABLE BOARD?

Packed away it's considerably more compact than a hard board and doesn't require a vehicle roof rack. A sturdy backpack contains the board and all its accessories, and can easily be transported in your car, inside your boat, on your back, or in the hold of an aircraft as you head off on a boating holiday.

A SET UP TO GET YOU UP

Inflating the smaller SUP's with the supplied pump is relatively easy, taking about five minutes to reach a decent pressure, and a few more to get it really firm. The stiffer the board, the better it responds and the easier it is to paddle. The four-person board (14'0" Ride MSL) is supplied with three pumps and valves - making inflation easier when roping in the services of the entire family. With a further minute or two to insert the plastic fin (some models), just attach the leash and you're good to go.

These Red Paddle boards are built tough and made to last. They consist of a double layer of hard-wearing and extremely durable polymer. This is a big plus when paddling in rocky areas and launching off



jetties and piers because they're able to withstand and absorb more knocks and drops than a hard board. Both the kid's board and family board have indestructible fins, so you don't have to worry about kids dragging or jumping on the board.

HITTING THE WATER

I spend a fair bit of time on the water, so I was more than happy to volunteer – no need to draw the short straw for this one! We headed to Quaggaskloof Dam in the Western Cape with a bakkie full of SUP's and paddles. Truth be told, with the number of boards needing to be inflated, we also took along a car battery operated air compressor. Our test fleet consisted of 9'4" Snapper MSL kid's board, the speedy 11'0" Sport MSL, and the family sized 14'0" Ride MSL. All the gear soon drew

attention in the campsite, and we had some envious onlookers as we prepared to hit the water. These boards are of course air-filled and have multiple grab handles, so they are easy to carry allowing two of us to comfortably manage the four person board with paddles.

In the water, the 14 foot Ride is large and stable enough to allow a family (and their gear) to easily paddle at a reasonable speed, and even to be used as a fun water platform for the kids. Our 10 year old companion loved the 9'4" kid's board and happily handled the multiple boat wakes that criss-crossed the dam. I spent time on the 11 foot Sport, which is designed to be a little faster without compromising too much on stability. It's a very comfortable board to cover a fair distance and perfect for a paddler weighing up to 90kg.

THE RANGE

Red Paddle Co stock a wide range of top quality inflatable SUP's, including shorter surfing boards, longer narrower racing boards, touring boards, kids' boards and more. The newest models include a special screw thread that allows for secure attachment of a range of accessories, from GPS devices and cameras to fishing rods and cup holders. So there's a board to suit all sizes, abilities and paddling ambitions.

The boards are supplied standard in the spacious backpack, along with the Titan pump, leash, repair kit and a water resistant phone case. Package prices including paddle start from R 12 999 while rentals are also available.

Visit a stockist nation-wide, or contact Red Paddle Co direct on (021) 425 1019 or email info@redpaddle.co.za. **LB**

INTRODUCING THE

ODYSSEY 720

THE NEW GOLD STANDARD IN LEISURE BOATING
from Angler Boats



Innovative design, superior build quality, immaculate handling, balance and immense power on tap, the all new

ODYSSEY 720 Stern Drive

perfectly showcases the Angler range of boats as enthrallingly desirable and the most exciting on the water.



Write a whole new chapter this summer in the new flagship of power boating.

Go to www.odysseyboats.co.za or australmarine.co.za to find an Angler dealer near you.

A PRODUCT OF AUSTRAL MARINE



NAUTIC



MERCURY ACTIVE TRIM

It was a few months ago when Mercury brought their new Active Trim innovation into South Africa and my charter boat Wizard, was one of the first to be fitted with the unit. The Mercury Active Trim comes in single or dual engine operation and can be used on any boat which is powered by Mercury F40 > 400 Outboard or Mercruiser Sterndrive engine. Basically, the Active Trim reads and talks to the engines, as well as other instruments in the boat such as the GPS. The Active Trim has five basic programmes and I find these work well straight out of the box on the factory settings. Each setting can be fine-tuned to the skipper's personal preference.

Words by **Rob Naysmith** - owner of Offshore Sportfishing Charters



In the beginning you need to understand how the system works and experience the varying attitude effects on your boat. On the first trip with the Active Trim installed and engines trimmed in for take-off, I immediately realised the benefits of the system when my boat reached 4000 rpm and popped out of the water onto the plane without touching a thing. The best attitude for your boat when starting off is with the engines trimmed right in, this gives you maximum thrust for take-off. Thereafter one trims the boat's bow up until the perfect ride is achieved for the current water conditions. In trimming a boat one is looking for a combination of comfort, safety and efficiency.

The Active Trim display has five orange lights that needs to be thought of as individual bow attitudes ... not numbers. So, the bottom number 1, is the bow down position and the top number 5 is the high bow position. I find that using the middle setting, number 3, is a good happy medium to start out the day with. All you need do then is press 2 or 4 once you're on the plane to fine tune your boat. With experience I've found that I only use

position 1 when I'm travelling head-on into big swell to give me a bow-down position to cut into the sea, and 5 when I'm running with a big swell and need to have the bow right up. The beauty of running a big swell with the Mercury system is that as soon as the boat starts to labour, the Active Trim makes the micro adjustments to keep the boat performing to its maximum. This clever feature responds by automatically trimming your engines in when needed and back out when it feels you're running perfectly again. Unless you watch the engines you will not realise how much they are being trimmed in this kind of situation. In essence what the system is doing is tucking your engines in the minute you begin to lose power in a trough to give you the thrust to power out, and then trimming out again once you are riding high. This, in my book, is saving a fair amount of fuel in that you no longer press on the throttles to power out.

Age and experience are not always an advantage and with my four plus decades of experience at the helm, I found it extremely difficult to relinquish control to the Active Trim system, much

like letting your child drive you around for the first time. But as soon as you get used to the feel of what the system does and how it affects your boat, it becomes clear that the benefits are real and you begin to let it take increasing control. Peace of mind came from knowing that at any stage I could touch the trim buttons and regain full control. However, it must be remembered that this control is brief and the system will return to the attitude you selected after a few seconds, to take permanent control you simply press the off button.

Now that I have become familiar with the Active Trim system, I allow the system to do most of the work throughout the day. For general running when conditions are moderate, the Active Trim system will take a huge load off your shoulders by constantly trimming your boat perfectly, and this will also save you fuel in the long run. When I encounter storm conditions, as we often do off Cape Point, I switch the Active Trim off and take full control of the boat, but maybe that's just a head adjustment on my part. When I ride a storm, I constantly work the trims, throttle



and wheel, often in varying amounts to counteract the changing conditions as they develop.

The benefit of the Active Trim system doing the work is that it frees the skipper up to be able to concentrate more on navigating, watching instruments and be more vigilant to the surroundings. I see a really positive use for speed boats and skiers in that once the skipper has

set the perfect boat attitude, anyone less experienced can drive without fear. Now even the skipper gets a chance to ski when the conditions are looking good.

The Mercury Active Trim is a plug-and-play system that can be fitted in less than an hour, with cutting the helm, ensuring that your boat is not out of action for any extended length of time. I suggest putting the helm display within easy reach of your

throttle hand. This offering should really be a standard fit on any boat as it adds so much safety and fuel saving benefits.

For more information on the Mercury Active Trim system contact your local Mercury dealer. Or, to book a charter with Offshore Sportfishing Charters, contact Rob on 083 2359 550, via email on rob@sportfishing.co.za or simply visit his website at www.sportfishing.co.za. **LB**

MARINE & PowerSports

THESE EXCITING SPECIALS NOW ON!



VIEW OUR FULL RANGE OF QUALITY BOATS
www.marineandpowersports.co.za

CONTACT US:

Marine and Powersports 044 382 4090 | dave@marineandpowersports.co.za
Andrew 060 752 9653 | info@marineandpowersports.co.za



WITHOUT A GLITCH

HOW TO: Correctly prep your boat for summer

Summer is upon us, so let's take the covers and tarps off our boats and get them ready for action. Let's look at some of the best tips to getting your boat out on the water without a hitch.

GENERAL INSPECTION

After getting your boat out of storage, the first step is to undertake a general inspection to ensure that everything is intact and in prime condition. Check bolts, fittings, anchor, dock lines and examine the hull for cracks. Check everything that does not require mechanical knowhow and check thoroughly.

PROFESSIONAL SERVICE

While some boaters have the capability to do minor mechanical work on their boats, the tougher jobs such as major services and other mechanical or engine related work is best left up to the servicing

dealer. Qualified dealer mechanics will check all the major things and the more subtle problems that might occur, such as degradation of the fuel lines and checking for fuel leaks. What's more is that dealers have the necessary diagnostic tools that can pick up anomalies such as compression variances which is very difficult for the boat owner to pick up without the required diagnostic tools. All motors and boats under manufacturer's warranty must be serviced at an authorised dealer to maintain the warranty.

SAFETY COMPONENTS

Once the boat has had its general inspection and service if required, it's time to stock up on the safety requirements such as life jackets, fire extinguishers, dry bags and radios. There should always be enough life jackets for the guests on the boat, and the life jackets should be regularly checked for wear and tear.

CLEAN BEFORE USE

During the colder winter months, when the boat is not in use, it will collect dirt and grime. Take your time to thoroughly clean the boat by polishing the metal, cleaning the seating, washing the windows and deck and hoovering the interior. It would be wise to now also wash your boat cover to prevent ruining all of your previous hard work.

BOAT ON THE WATER

Once all the cleaning and maintenance checks have been done, you are ready to take your boat out on the water. What you don't want to do is go full throttle as soon as the hull touches the water. Rather, let the motors warm up slowly and "settle in". Going at a slower pace also allows you to notice any other inconsistencies, anomalies, tracking problems and steering problems that might crop up. Be cautious on your first trip all the while looking and listening for any signs of trouble.





STORAGE SUGGESTIONS

- Make notes of any repairs before your boat is stored.
- Fix hull cracks before the boat goes into storage because cracks can worsen during storage.
- As soon as you get the boat out of the water, remove the bilge drain and give the hull and the deck a good scrub to remove as much corrosive salt and sediment as possible.
- Clean all your through-hull strainers and open the sea cocks so that water can drain out, leaving them open for quite a while to dry.
- Clean the interior thoroughly and remove cushions and any other material items that attract mould.
- Clean out the fridge, properly remove all moisture, and leave the door of the fridge open to reduce mould.
- Clear out any storage lockers and leave the doors open for better air ventilation to ensure the hatch dries.
- If your boat is completely out of action for the winter months, adding a fuel stabiliser to stop condensation is necessary. Remember to run the motor for about ten minutes to get the fuel stabilisers flowing through the fuel pipes and engine.
- An alternative to adding stabiliser is cleaning out your fuel tanks and leaving them empty.
- Remove electronics and batteries and store them in a dry place where maintenance such as desulphating and recharging can take place.
- Flush the cooling system completely to remove any salt and sediment buildup that can cause damage and an immense amount of corrosion while your boat is stored.
- Lubricate all hinges, latches, winches, linkages, ratchets, bow rollers and add grease to wheel bearings on the trailer. Apply marine grease to the gimbal bearing and engine couplers on sterndrives.
- Remove all flares and fire extinguishers and check their expiration date. Life jackets, fenders and ski ropes should also be removed and stored in a dry place.
- Check the sacrificial anodes and remove and replace those which are corroded by 50% or more. **LB**



The ultimate Suzuki package



Way of Life!



Classic 230 on galvanized double axel trailer

Optional Suzuki motors

With 200hp APX drive by wire from R515 000

With 300 APX drive by wire from R600 000

With 350 APX drive by wire from R695 000

NIPB.co.za
NATAL POWER BOATS

Visit us at our new showroom!
121 Malacca Road, Durban North
031 305 8081

THE
ULTIMATE
4-STROKE OUTBOARD

TRIMMED FOR SUMMER

Trim your boat with ease and finesse

Words by **Walter Ellis**



Getting the trim just right on your new boat takes a bit of practice, but we all know that practice makes perfect. And, it won't be long before your boat is gliding across the water and you have become a seasoned pro at getting your boat trimmed. If you are unfamiliar with the different aspects of trimming your boat, ask a friend who owns a boat to take you through the various easy stages. Optimising the 'hole shot' and generating peak efficiency from your motor through the careful control of

trim will have your boat planing in record time and the earlier you get your boat planing, the less your fuel bill will be.

it will be a lot more difficult to attain the correct trim.

KNOW YOUR BOAT

The methods of trimming will vary from boat to boat, yet the general principles of trim apply to all boats. Many different factors affect how your particular boat is trimmed and these are boat size, hull shape, weight distribution, sea conditions on the day, wind factor and wave action. No day will be exactly the same when it comes to trimming.

TYPES OF TRIM

Trimming In

- Lowers the bow in the water
- Results in the boat planing more quickly, particularly with increased load
- Improves ride in choppy seas
- Increases steering torque or pull to the right

Neutral Trimming

- Lowers the bow in the water
- Improves fuel efficiency
- Propeller shaft sits parallel to the surface of the water

Trimming Out

- Lifts the bow
- Increases the top speed of the boat
- Increases clearance in shallower waters
- Increases steering torque or pull to the left on normal rotation motors.
- Can cause the boat to bounce or porpoise if used excessively
- Can cause cavitation of the prop and result in over-revving.

WEIGHT DISTRIBUTION

For the best trim to be achieved on your boat, the weight distribution needs to be correct. What this means is that the skipper needs to delegate where the passengers sit and where the cooler boxes and other accessories are placed for even distribution of weight. Too much weight on one side of the boat will cause it to steer badly and



BAD TRIM

An indication of incorrect trim is when the bow is pushing water out in front of it and the hull is throwing up a lot of spray. This is an indication that the motor is trimmed in too far. Conversely, when the outboard motor is trimmed too far out, the stern sets itself deeper and the bow is lifted higher out of the water.

KNOW YOUR BOAT

Getting to know your boat and how it gets

onto the plane and trim is the key to your success. Practice as much as you can to find the sweet spot of your boat's trim. If you drive a number of different boats, you will need to be accustomed to various types of trim associated with the different boats.

DYNAMICS OF TRIM

When the angle of your trim is too great, the boat will lose speed and the revs will climb because the propeller is not gaining the necessary purchase on the water. It

is often necessary to trim the motors in during tight turns so that the propeller does not lose its grip. Trimming out for straight line running will give added speed without the need for applying more throttle.

TRIM LIKE JIM

Trimming your boat perfectly every time comes with practice. The only way to get that needed practice is to get out on the water and do your favourite pastime – boating, boating and more boating. **LB**



HOW TO TRIM A PLANING POWER BOAT:

- When the motor is in neutral, use the trim switch to tilt the drive as far down as it will go.
- Next put the motor in gear and throttle up in a steady manner till you reach cruising speed.
- Now using the trim switch, bring the motor up slowly and you will notice the boat lifts off the water and increases speed.
- Continue to tilt the motor up until a drop in speed is detected or a dramatic increase in engine revs or the noise of a ventilating propeller. The boat may begin to porpoise in these conditions indicating that the drive is trimmed too far up and needs to be adjusted down.
- Trim the motor down in small increments until a consistent speed is reached.
- During the boat trip, it will be necessary to make trim adjustments to suit the different conditions that are being experienced by the boat relating to weather, wave action and currents being experienced.

Start Your
ADVENTURE

THE PERFECT ACCESSORY FOR ANY BOAT



EASY STORAGE



FAST INFLATION AND DEFLATION



EXCEPTIONAL DURABILITY



FUN AND FITNESS FOR ALL THE FAMILY



MULTI AWARD WINNING



FIND YOUR BOARD TODAY AT
WWW.REDPADDLECO.COM

TEL +2721-425-1019 | EMAIL INFO@REDPADDLE.CO.ZA

2017 WAVERUNNERS

SUMMER DEAL

R283 000 INCL VAT

FX1800 HO WAVERUNNER



Package includes Versatile "stage 1" fishing/ weekend fun rig with removable fishing cage, capsized bottle, rod holders and cooler box, 4 inch GPS/Sonar unit and 13" wheel galvanised, breakneck trailer (excluding spare wheel)



Waverunner and Trailer only – R268 000 INCL VAT (excluding spare wheel)

- Still the most popular personal water craft preference for jetski fishing
- Still the most stable and comfortable dry ride
- Still the best value for money with 3 seater handling performance and reliability



FOR RETAILERS DETAILS NEAR YOU CONTACT WORLD OF YAMAHA 011 259 7600 / 0860 YAMAHA - WWW.YAMAHA.CO.ZA



AUSTRAL MARINE

An exciting new chapter unfolds

Austral Marine's founder Don Jarret retired on the 31 October 2017 after 35 years at the helm. Don managed to build a brand legacy that has established Austral as the premier leisure boat manufacturer in the South African skiing and water sports scene for over three decades. Austral has now moved into a new chapter of this legacy and is well poised to capitalise on this solid foundation.

Jacques Brümmer, the newly appointed CEO, has welcomed the recent launch of a completely new Odyssey 720 Sundeck that was showcased at the recent Cape Town International Boat Show. Brümmer commented that the overall response was extremely positive with some

prospective buyers expressing great interest and commenting that this new vessel competes favourably with many of the more expensive imported variants available in the market. The Odyssey 720 series one vessel has already been pre-purchased with signed orders and deposits paid to secure this amazing vessel, with vessel number two due off the production line before the end of November.

Knysna Marine had the good fortune of being the first to truly test this magnificent beast with their following thoughts.

ODYSSEY 720

The magnificent newly-commissioned Odyssey 720 has just arrived at the shop and quickly found herself taking her first

sortie onto the water. Incredibly powerful, she hops onto the plane in the blink of an eye and exudes confidence with her phenomenal stability and handling in what was very choppy water. Built by Angler Boats, the Odyssey 720 Sundeck, which is exclusive to Knysna Yamaha and Linex Yamaha in JHB, offers potential customers a more affordable locally-built option at the top end of the market, as opposed to them having to look at an all-too expensive imported boat. Outboard and inboard versions of the Odyssey 720 are available, with a host of features on offer. The Odyssey 720 is powered by a Volvo Penta 6.2 LV8 430hp inboard engine and is competitively priced from R880 000 with a host of standard features.



A FOCUS ON THE FUTURE

Austral's new leadership is focused on providing an exciting range update. The introduction of new models will ensure they stay abreast of the global market trends and continue to excite and entice the next generation of boaters while maintaining the lasting quality and attention to detail that the company was built on. The core of the production and operations experience has been retained. Jason Price leads this team with 29 years experience to draw on. Customer and dealers alike can rest assured that Austral Marine will continue to deliver on their promise of exceptional build quality and leading technological innovation, supported by a dedicated professional dealer network.


With access to the group's in-house naval architectural team, Austral will accelerate their innovation and lead the market with cutting-edge aesthetic appeal and performance superiority across their complete boat range, all whilst introducing a range of new products that are set to excite and engage a broader boating market. There are already some great new projects underway that the company is confident will be game-changers in the market and are excited to reveal to the public over the next few months. Austral, under the new leadership, has also engaged with a number of export

markets. They are confident this will bear fruit in the near future and be a catalyst for further innovation and product improvements to benefit the broader Austral market whilst flying the proudly South African flag.

Yamaha have recently taken delivery of the refreshed Panache 2150 OB version which was also exhibited at the recent Cape Town Boat show and are expecting this model to do exceptionally well in and around Gauteng and KZN during the upcoming season. This refreshed model has significant changes driven primarily by customer and dealer feedback on experiences of the older models. These include a transom walk through with step-in removable cushion for easy access with storage hatch. The driver's helm has taken on the newer Panache dash to give it a more modern and user-friendly feel. The passenger dash is an all-new design with a lockable cubby for your goodies. The former plexiglass screen has been replaced with a tinted safety glass screen to give a better view as well as offer better aesthetics. The bow has as standard filler cushion to change the bow seating into a plush lounge area for those who want to tan in luxury. The cockpit area has increased in width by around 100mm to give you more interior space but the outside dimensions have been kept the same. The top deck has had a crease line

added in to give the iconic 2150 shape a little face lift. If you have loved the 2150 as much as we have, here is the upgrade you have been waiting for.

Austral have recently launched a commemorative LEGEND series that has a limited production run of 50 serialised boats across the entire range. These are available in either a Classic or Sport configuration that includes exclusive colour schemes, Riveria Italian crafted steering wheels, Premium Rockford Fosgate sound system, canopy, interior strip and docking lights, removable clip-in carpets, special commemorative and serialised decals and many more premium features guaranteed to enthrall those fortunate enough to secure their limited edition. Not only are these LEGEND boats packed with premium standard features, customers also have the opportunity to view their unique boat build process on a daily basis until the day of delivery.

For more information contact the team at Austral Marine on (021) 511 0653 or email jacques@australmarine.co.za 



ODYSSEY 720 SUNDECK – OUTBOARD and INBOARD VERSIONS

Optional Extras:
Stand-off bracket (Outboard Version)
Shower unit at stern
Boat Cover
Cockpit cover
Bow Cover
Canopy
Wakeboard Tower
Wake ballast tanks
Porta Potti

STATS

L.O.A. : 7.75m including moulded-in platform
Beam max: 2.58m
Weight: Approx 1100 kg
REC HP: 225 – 350 SINGLE ENGINE (Outboard version)
REC HP: 300 – 430 (Inboard version)

TRAILER STATS

Tandem axle braked.
Spare wheel standard.
Custom mag wheels including spare.
Tyre size : 215 x 15
Tare : 635 kg
GVM : 3000 kg



leisure **boating**

SA's top selling powerboat magazine

JOIN our online community. VISIT our website now for the LATEST content & EXCLUSIVE features. SEARCH for fishing charters. READ the latest features from the mag. BROWSE online classifieds and businesses or add your own for free. ENTER the latest competitions. WATCH videos of our latest reviews.



WWW.LEISUREBOATING.CO.ZA

THE ALL-NEW FAIRLINE SQUADRON 53

Courtesy of **Janine Avery**

OWN YOUR SHARE OF A LUXURIOUS LIFESTYLE

Boating World is excited to announce that as of July 2018, Cape Town waters will be graced by the presence of a 53 flybridge motor yacht whose stunning design is simply second to none. And, you could own your very own piece of her.



SQUADRON

FAIRLINE

LOYING LIFE



That is because Boating World has secured a slot to bring in the very first Squadron 53 and South Africa's leading luxury boat distributor has a quarter share available – a

fantastic opportunity you don't want to miss out on!

Spacious, airy and the epitome of luxury, the Fairline Squadron 53 is sure to

add a whole new level of class to Clifton beaches. Sharing her hull design and engineering with two Fairline stable mates, the 53 Open and the Targa 53 GT, but with a brand new deck design by award-winning Italian designer, Alberto Mancini, this new Fairline model offers bold styling and uncompromising engineering.

"We restyled the deck using the current hull, but you still can see the DNA and Fairline heritage. It's immediately recognisable as a Fairline," says Mancini.

Re-imagining the classic Fairline form, Mancini has managed to add a phenomenal amount of extra volume to the staterooms with the master cabin featuring 6 foot 4 inches of headroom at the foot of bed. The Squadron also features a flat floor throughout the cockpit and saloon, offering more headroom when compared to the other two models and additional seating room and storage. This remarkable onboard space is complemented by large saloon windows that maximise views, a raked front windshield and sweeping superstructure with exclusive ceiling glazing, a glass entrance that adds to the feeling of spaciousness and bathes the interior with light, and she also has large windows in the cabins.

The Squadron 53 is the first Fairline of its size to feature a cleverly designed seating area on the foredeck and on Boating World's model this will be complemented with the added extras of a UV resistant foredeck sun canopy with carbon fibre supports and tie downs on the foredeck and stern. She will also feature a cockpit sunpad with a powered sunshade and a powered hydraulic submersible swim platform. The clever seating area that folds out of the transom for swimmers and other water activities, ensures that the Squadron stand out from the crowd.

The striking swept flybridge features an amazing layout that really makes yachting an exhilarating experience. Providing the best views in the house, the flybridge provides the ideal position for captaining the boat and is designed to make socialising and relaxing with guests easier than ever, with seating and sunning surround the helm and a bar unit featuring BBQ griddle and icemaker. The Flybridge and side decks also feature teak-laid flooring which effortlessly compliments the luxurious finishes found throughout the vessel.

“Everything we do is about the customer experience. We’re trying to make everything they touch or experience on the boat the best it can possibly be,” says Andrew Pope, head of design for Fairline. And it is this ethos that is carried through to the interior of the Squadron, which will be available in the four stateroom option with a galley-up layout. The master is full-beam amidships with a VIP room in the bow and guest staterooms with side-by-side berths aft and to port.

These flexible, spacious accommodations make the Fairline Squadron 53 a class-leader and when combined with the British boat builder’s uncompromising engineering heritage, you can be assured of only the best possible appointments. On this note, the Squadron 53 that will be arriving in Cape Town next year will be fitted with two Volvo Penta D11-725 EVC shaft-drive diesel engines with a speed of 32 knots, a 12 inch GPS map touchscreen display at the helm with AIS 600 marine cameras to the engine room and cockpit, a 32 inch Samsung 4k HD TV with Harman Kardon entertainment system and wireless connectivity to saloon with Fusion RA50 and speakers, a William’s Jet tender and a Seakeeper gyro stabiliser.

The Seakeeper, also affectionately known as the wife keeper, is the first truly practical and modern anti-roll gyro. Encased inside a vacuum encapsulation, a flywheel spins at speeds of up to 10 700 rpm, creating a powerful gyroscopic force that counteracts boat roll to port and starboard. This virtual elimination of boat roll means no more seasickness, anxiety and fatigue for guests on board, allowing everyone to really make the most of each adventure out on the water.

With Boating World’s innovative co-ownership option, you can now own your very own share in the new Squadron 53 at a fraction of the cost of full boat ownership. Enjoy your boating hours onboard with friends and family or hold meetings on the vessel and write it off as a business allowance. You will also save money by sharing the upkeep and mooring costs and the team at Boating World will take care of the management of the vessel including mooring, insurance, maintenance, crew and cleaning, leaving you to simply enjoy the pleasures of boat ownership. A sharing scheme is as a great way to spread the costs and share the fun and what’s more, you can even make use of the Squadron 53 in



Europe before it makes its journey to Cape Town in 2018.

So, what are you waiting for? Contact Boating World today to chat to the team about purchasing a quarter share in the

brand new Fairline Squadron 53. For more information email info@boatingworld.co.za or call the team directly on (021) 418 0840. View the full Fairline range on www.boatingworld.co.za/fairline **LB**



NEXT MONTH...

Don't miss the January edition of Leisure Boating magazine where we put the new Panache 2150 LX with a Yamaha 250 HP Vmax through its paces to see if this tried and trusted family favourite is as good as it always has been, or even better.

BENETTI - 10TH CLASSIC M/Y BS010 SUPREME 132' SALE

The shipyard has announced the sale of the new BS010, which will be delivered to her owner in the first half of 2018. The main features of this 40-meter yacht, included in the Classic Supreme 132' collection, are the streamlined profile, expansive exterior and interior volumes, exceptional standards of comfort, and Main and Upper Decks that are unusually bright and open. With a length of 40.24 meters and a maximum beam of 8.28 meters, this

new megayacht designed by Benetti will be ready in 2018 for delivery to her owner, who was advised by broker Arcon Yachts, based in Monaco, which has been collaborating with the Italian shipyard for many years. Arcon Yachts will also be in charge of the project management of the construction of BS010, which will be the second delivery to be done next year with Benetti, right after the BF106. A uniquely fascinating yacht in many senses, it features a series of original details, including rotating external steering fins that retract into the

gunwale, running lights integrated with the exterior styling to give the boat a more contemporary and beguiling profile, the Jacuzzi in the Upper Deck and, finally, the external aerial stairways. BS010 also differs from the previous unit in the line by introducing other novelties too, including the possibility of installing a steam generator in the owner's bathroom.

Fitted with innovative technology systems, this Classic Supreme 132' uses the BEST - Benetti's Exclusive Sea Technology platform to integrate all the yacht's electronic and onboard systems and provide a unique user-friendly interface, while the Integrated Bridge system interfaces all the navigation and communication instrumentation to make managing the boat even safer and more reliable. The Sun Deck stands out for its space (100 square meters) and sophisticated decor, while the distinguishing feature of the outdoor area on the Upper Deck is the "aerial" stairway with a steel structure and teak steps, making the deck unbelievable spacious and filling it with light. On the Main Deck the big saloon is flooded with light thanks to the big windows on both sides of the yacht. Guests are accommodated in four large double cabins with big windows overlooking the sea, while the captain's cabin is located on the Upper Deck. The engine room houses a pair of MTU 12V2000M72, driving the yacht to a top speed of 15.5 knots and a cruising speed of about 14.5 knots. The range at cruising speed is 3,400 nautical miles.



NEW ECLIPSE 680 custom built



BOATBUILDERS


Cell: 079 282 8941 | Email: info@stlaizemarine.co.za | www.stlaizemarine.co.za



EVO 43' OFFICIAL TENDER FOR ROSSINAVI AT THE MONACO YACHT SHOW

For the third year, after the great success of the previous editions, Rossinavi confirmed the iconic first model by Evo Yachts as its official tender for the Monaco Yacht Show 2017. The innovative Evo 43' accompanied the exclusive clientele of the shipyard. The choice to renew this partnership was inspired by the strong affinity between the two Italian shipyards in their ideas of design and innovation. Evo 43', thanks to its design and functionality, embodies the values of a way of conceiving the yachting that joins Rossinavi and Evo Yachts and that reflects the desires of the many millennials who are now entering the industry, but conquers – at the same time – those who already have many years of experience in this sector.

Evo 43' was at the boat show in its elegant Enchanted Blue colour, in a brand-new HT version, featuring a full-carbon T-Top. Designed by the Studio Rivellini and built by Blu Emme Yachts, it is a 13-metre day cruiser with flaunting sculpted, muscular, yet sleek, minimalist lines, which summarised the concept of form and function (functional design) with a straight bow and high topsides that flow harmoniously towards the stern. That said, the Evo 43' is not just about design, comfort, form and function. Although these features would be enough to make it a boat of great interest, the designers' efforts focused above all on cruising dynamics. To power the vessel, two Volvo Penta IPS 600 engines (for a total of 870 HP) have been chosen: the best on the market in terms of performance, reliability, sound proofing, ease of use and moderate consumption, these units also grant absolute safety and comfort for the owner and his guests. The hull makes the Evo 43' a keen efficient boat, with maximum speed up to 38 knots and cruising of 30.

For more information visit the Evo Yachts website at www.evoyachts.com. For press related enquiries contact Nadia Bonini at Sculati & Partners on nadia.bonini@sculatiandpartners.com. 



NATAL CARAVANS & MARINE

“One World Outdoors”

Service & Repairs
Outboards • Caravans
Tents & Camping Gear
Selected used boats
(cats, mono hulls)

FULL RANGE OF YAMAHA BOATS
SEACATS/EXPLORER UTILITY



ESPRIT 17' to 19' Boats

FULL RANGE OF ANGLER BOATS
PANACHE/BENGUELA



KOSICAT OFF-SHORE - 16' TO 18.6' F/C + C/C



SA's Top selling outboard motor • Renowned reliability & durability • Renowned corrosion resistance • Wide range of advanced 2 and 4 stroke models 

• Deliveries nation wide • Finance with all major banks



www.natalcaravans.co.za

Contact Bill Harrison: 1 Wareing Rd, Pinetown, KZN
Tel: (031) 702 7291 • Email: info@natalcaravans.co.za

BOAT CLASSIFIEDS

07 Cruiser 310 R1 450 000



Excellent condition – like new, 80 hours twin 5.0L Volvos. 32 Foot. 2 Bedrooms, 5 berth. Generator, aircon and too many features to list. Unbelievable deal! Contact John on 083 629 2835

10 Cobalt 323 R3 450 000



Amazing Day boat like new on Triple axle trailer. Generator, aircon, head, Uhf radio, duel fridges, Twin 8.2l V8 MerCruiser 425 HP inboards. Done only 100 hours. Excellent condition. Replacement value R 5.8M. Bargain! Contact John on 083 629 2835

Countess 190 R420 000



Boat is almost new with 150 HP V-TEC low hours. Hydraulic steering, full gauge kit, flush mount controls, ski bar, retractable stainless steel cleats, sunbed, swivel captain seat with bolster, ski hatch, built in fuel tank, scuppers, boarding platforms, boarding ladder, 5 gang switch panel, bilge pump. Contact Marine & Powersports on (044) 382 4090

Sea Ray 515 Sundancer 25% Share



2x Cummins 540 engines, 1500L fuel capacity, forward cabin with double bed and own bathroom and separate shower and stern cabin in a twin. 2 x Heads. Each cabin has its own TV and DVD player. Fully equipped open planned galley with convection microwave and fridge freezer. (Ref 1086BW). Contact Derrick at Boating World on 082 881 2607

Riviera 41 Flybridge R4 950 000



Cruise Mozambique Archipelago, and/or Marline game fishing only, this incredible buy with twin diesel Cummins 540 HP motors, sleeps 5-7 people, outriggers, flybridge, half rear awning, stern thrusters, camera for engine room, teak laid swim platform, live bait tank in transom, white vinyl upholstery, refrigerator/ icemaker combo. (Ref 557BW). Contact Morgan at Boating World on 078 544 7668

Elf 1350 R125 000



This little boat, with its wet deck, can investigate small nooks and brave the sea. Shallow waters are no problem and it boasts stability with its cathedral hull. It has live well, built in tackle box, sun canopy and so much more. With a Suzuki 30 HP 4-Stroke. Brand new. Contact Andrew at Marine & Powersports on (044) 382 4090

15 Fairline T38 Open R4 500 000



2 x Volvo D4 300 EVC-E, G6 Props. Bathing platform and side decks, bow thruster, folding teak cockpit table with sunbed conversion, 4kW generator, microwave and cockpit bar refrigerator, Garmin GPS map 820 (8") display to helm, powered hydraulic submersible bathing platform, teak floor. (Ref 1207BW). Contact Derrick at Boating World on 082 881 2607

Infanta 5.2 SRI R210 000



The 5.2 SRI is definitely the most popular boat in the Infanta range. This boat is in great condition. The boat has 2 x 40 HP Honda 4-Stroke engines. Hours very low. Beaching kit. Full safety for Cat C, GPS/fish finder, 29 MEG radio, VHF radio, Fusion sound system, removable stainless steel bow rail, sun canopy, boat and engine covers. Call Marine & Powersports on (044) 382 4090

Bavaria 33 Hardtop R1 150 000



Raymarine C70 GPS and radar, Icom VHF, bow thruster, retractable soft sunroof electric, cockpit wet bar and fridge, cockpit seating, cockpit sunbed, twin cabin layout, saloon TV, DVD and CD player with USB, fully galley with fridge, 2 plate stove and microwave (Ref. 942BW). Contact Morgan at Boating World on 078 544 7668

06 Larson 370 R1 100 000



Turnkey ready and great for family cruising or overnight. TV Set, log speedometer, CD player, saloon 7 cockpit speakers, DVD player, compass, navigation centre, GPS, VHF, autopilot, depth sounder, battery charger, deep freezer, hot water, air conditioning, refrigerator, electric head. (Ref. 1095BW). Contact Morgan at Boating World on 078 544 7668

Sea Countess 170 CC R365 000



The boat is brand new, a truly perfect dual purpose experience. The hull is a deep V and is the smoothest ride you will find. Powered by a brand new 115 HP Mercury 4-Stroke. Braked trailer, full gauge kit, standard hydraulic steering, mount trolling bar, wet deck, with through the floor drainage, boarding platforms with ladder, live well, ice box, built in tackle box, built in rod racks. Call Marine & Powersports on (044) 382 4090

Supercat 38 R1 100 000



Built in long range tanks, 550 L including filters, fuel lines etc. 6 x under deck hatches, covers and frames, 2 x Suzuki DF 115 UL, 2 x hydrofoils (trim plates), extended transom, anti-fowling to hull, 2 x anchor systems, fly fishing platforms forward & non slip to bow and sponsons, S/steel braai with hinged lid ala Webber, safety equipment for eight incl. lifejackets, horseshoe type life-rings under hard top (Ref. 1122BW). Contact Morgan at Boating World on 078 544 7668

Fjord 40 Open R3 750 000



Volvo Penta IPS 500 Engine, 1 000 L fuel capacity, available for sale in South Africa, the Fjord Open offers magnificent, king-sized living quarters with unique rainfall type shower, large cockpit table, on deck galley, two-burner gas stove, pull out fridge, double berth with one electric head, teak on aft deck and swim platform, IPS Joystick, 12V battery charger, overhead lights, cockpit convertible facing seats, bimini top with acryl glass, spotlights, top mast. Aft sunbed. Sleeps two people. (Ref 958BW). Contact Morgan at Boating World on 078 544 7668

Riviera 37 R2 782 000



All new recently launched 2018 Squadron 53, will be available in a co-ownership. Complete with Gyro stabilizer and Williams Jet. For more information and price contact Derrick at Boating World on 082 881 2607

Mustang 3500 incl. Airberth R2 200 000



Twin Volvo Penta D4 diesel 260 HP motors with air conditioner, teak bathing platform, sunpads, Fireboy engine room extinguisher, bow thrusters, diesel 6KW generator, Furuno GP7000 GPS. Including AirBerth. (Ref. 345BW). Contact Derrick at Boating World on 082 881 2607

Cobra Cat 900 R835 000



2 x 275 HP Mercury Verado motors, 2 x 350 L in board fuel tanks, 50 L water tank, SAMSA registered category B, COF valid to October 2017, Garmin 7410, Garmin 7 inch, chartplotter/ sounder, Raymarine auto pilot, LED lighting, just had a major Service (Ref. 1200BW). Contact Wayne at Boating World on 083 324 4630



GET A 1 YEAR
DIGITAL
SUBSCRIPTION
FOR JUST
R151.00!

SUBSCRIBE & SAVE!

Get South Africa's leading powerboating magazine delivered straight to your door. Avoid long queues and magazine shortages at your local store. Or subscribe to our digital magazine, which can be viewed on your tablet, smartphone or PC. Whether you're at home, work or on holiday you can make sure you have your one-stop powerboating magazine with you. Get exclusive entry into our various competitions. Save money per issue and make sure you never miss an edition.

MAGAZINE SUBSCRIPTIONS

1 year magazine subscription
R 295.00

2 year magazine subscription
R 590.00

DIGITAL SUBSCRIPTIONS

Single digital purchase
R18.00

1 year digital subscription
R151.00

Imagine owning a yacht three times bigger than you would usually invest.

Fast becoming a familiar way of owning a luxury yacht, co-ownership means you pay a fraction of the full price with the benefit of shared monthly costs, a full time skipper and a fully managed asset.

For your consideration, Boating World has two Fairline Yacht co-ownership opportunities available in Cape Town.



FAIRLINE SQUARDON 53

An exquisite masterpiece created in collaboration with superyacht designer Alberto Mancini. From its striking swept flybridge, to its category-defining layout, this yacht delivers the epitome of on-board luxury.

Sleeps 6 - 9 | Twin Volvo Penta Shaft Drive
Seakeeper Giro Stabiliser | Williams Jet Tender

R5,275,999 excl. VAT own a 25% Share



FAIRLINE TARGA 48

The spirit of the Mediterranean exists in every square inch of this perfectly formed yacht. Luxurious and sociable with exceptional British engineering.

Sleeps 5 - 7 | Twin Volvo Penta IPS
Electronic hardtop | Williams Jet Tender

R2,587,719 excl. VAT own a 25% Share



Contact us for more information on these opportunities and other co-ownership offers we have available.

info@boatingworld.co.za | boatingworld.co.za | +27 (0) 21 418 0840

BOATING WORLD 